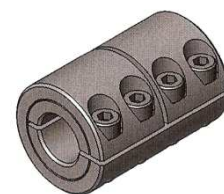
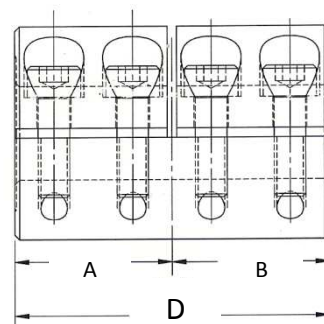
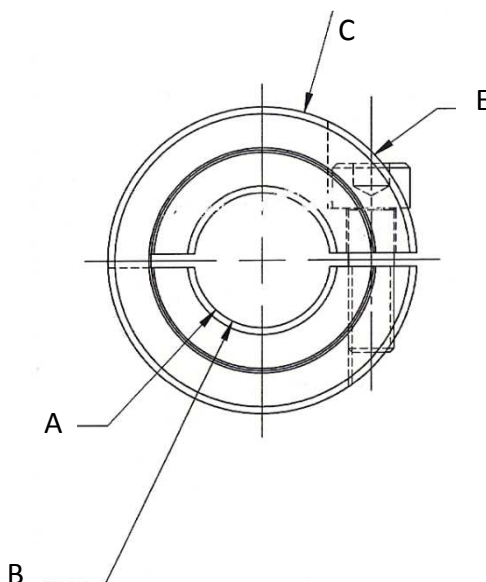




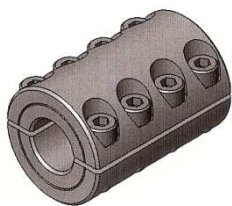
Acoplamiento Rígido 1 pieza (sin chavetero)



- Rectificado de Precisión
- No daña el eje
- Admite altas cargas torsionales
- De fácil Montaje y Ajuste
- Fabricados en: Acero y Acero Inoxidable.

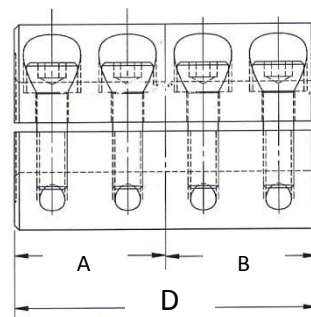
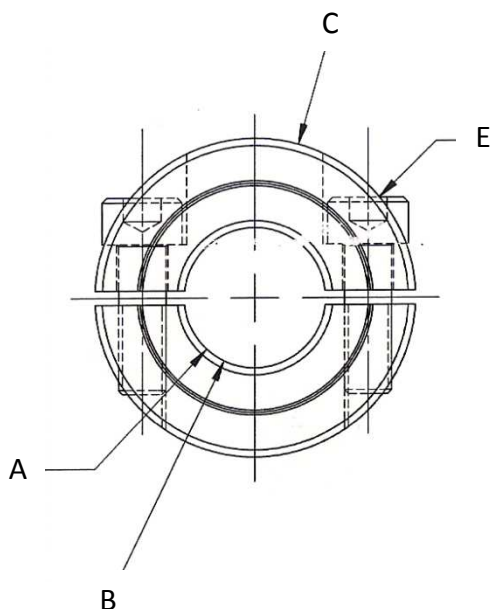


| Ref. ACERO | REF. ACERO INOXIDABLE | A Ø mm. | B Ø mm. | C Ø Ext. | D Longitud | E Tornillo |
|--------------|-----------------------|---------|---------|----------|------------|------------|
| 0255LM006006 | 0255SM006006 | 6 | 6 | 16 | 30 | M3x8 |
| 0255LM008008 | 0255SM008008 | 8 | 8 | 18 | 30 | M3x8 |
| 0255LM009009 | 0255SM009009 | 9 | 9 | 24 | 35 | M3x10 |
| 0255LM010010 | 0255SM010010 | 10 | 10 | 24 | 35 | M3x10 |
| 0255LM012012 | 0255SM012012 | 12 | 12 | 28 | 45 | M4x12 |
| 0255LM014014 | 0255SM014014 | 14 | 14 | 30 | 50 | M4x16 |
| 0255LM015015 | 0255SM015015 | 15 | 15 | 34 | 50 | M5x16 |
| 0255LM016016 | 0255SM016016 | 16 | 16 | 34 | 50 | M5x16 |
| 0255LM018018 | 0255SM018018 | 18 | 18 | 36 | 60 | M5x16 |
| 0255LM020020 | 0255SM020020 | 20 | 20 | 40 | 65 | M6x16 |
| 0255LM025025 | 0255SM025025 | 25 | 25 | 45 | 65 | M6x16 |
| 0255LM030030 | 0255SM030030 | 30 | 30 | 54 | 75 | M6x18 |
| 0255LM035035 | 0255SM035035 | 35 | 35 | 57 | 80 | M6x18 |
| 0255LM040040 | 0255SM040040 | 40 | 40 | 60 | 90 | M6x18 |
| 0255LM045045 | 0255SM045045 | 45 | 45 | 73 | 105 | M6x18 |
| 0255LM050050 | 0255SM050050 | 50 | 50 | 78 | 120 | M8x25 |



Acoplamiento Rígido 2 piezas (sin chavetero)

- Fácil Montaje sin necesidad de desplazar los ejes.
- Rectificado de precisión.
- No daña el eje.
- Admite altas cargas torsionales
- De fácil Montaje y Ajuste
- Fabricados en: Acero y Acero Inoxidable.



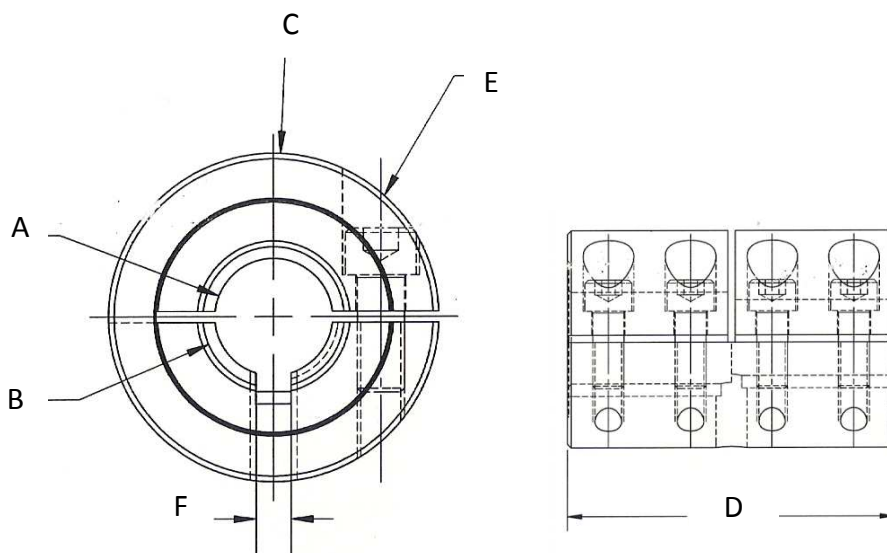
| Ref. ACERO | REF. ACERO INOXIDABLE | A Ø mm. | B Ø mm. | C Ø Ext. | D Longitud | E Tornillo |
|---------------|-----------------------|------------|------------|-------------|---------------|---------------|
| 0255LM006006F | 0255SM006006F | 6 | 6 | 16 | 30 | M3x8 |
| 0255LM008008F | 0255SM008008F | 8 | 8 | 18 | 30 | M3x8 |
| 0255LM009009F | 0255SM009009F | 9 | 9 | 24 | 35 | M3x10 |
| 0255LM010010F | 0255SM010010F | 10 | 10 | 24 | 35 | M3x10 |
| 0255LM012012F | 0255SM012012F | 12 | 12 | 28 | 45 | M4x12 |
| 0255LM014014F | 0255SM014014F | 14 | 14 | 30 | 50 | M4x16 |
| 0255LM015015F | 0255SM015015F | 15 | 15 | 34 | 50 | M5x16 |
| 0255LM016016F | 0255SM016016F | 16 | 16 | 34 | 50 | M5x16 |
| 0255LM018018F | 0255SM018018F | 18 | 18 | 36 | 60 | M5x16 |
| 0255LM020020F | 0255SM020020F | 20 | 20 | 40 | 65 | M6x16 |
| 0255LM025025F | 0255SM025025F | 25 | 25 | 45 | 65 | M6x16 |
| 0255LM030030F | 0255SM030030F | 30 | 30 | 54 | 75 | M6x18 |
| 0255LM035035F | 0255SM035035F | 35 | 35 | 57 | 80 | M6x18 |
| 0255LM040040F | 0255SM040040F | 40 | 40 | 60 | 90 | M6x18 |
| 0255LM045045F | 0255SM045045F | 45 | 45 | 73 | 105 | M6x18 |
| 0255LM050050F | 0255SM050050F | 50 | 50 | 78 | 120 | M8x25 |



Acoplamiento Rígido 1 pieza (con chavetero)



- Alta capacidad de par y rigidez torsional.
- Sin Juego
- Sujeción por abrazadera.
- Fabricado en: Acero y Acero Inoxidable

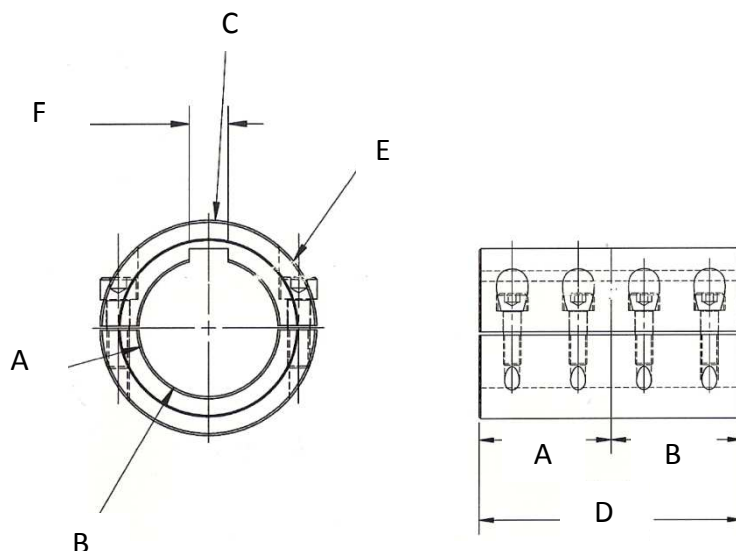


| Ref. ACERO | REF. ACERO INOXIDABLE | A Ø mm. | B Ø mm. | C Ø Ext. | D Longitud | E Tornillo | F Chavetero |
|---------------|-----------------------|------------|------------|-------------|---------------|---------------|----------------|
| 0255LM006006K | 0255SM006006K | 6 | 6 | 16 | 30 | M3x8 | 2x2 |
| 0255LM008008K | 0255SM008008K | 8 | 8 | 18 | 30 | M3x8 | 2x2 |
| 0255LM009009K | 0255SM009009K | 9 | 9 | 24 | 35 | M3x10 | 3x3 |
| 0255LM010010K | 0255SM010010K | 10 | 10 | 24 | 35 | M3x10 | 3x3 |
| 0255LM012012K | 0255SM012012K | 12 | 12 | 28 | 45 | M4x12 | 4x4 |
| 0255LM014014K | 0255SM014014K | 14 | 14 | 30 | 50 | M4x16 | 5x5 |
| 0255LM015015K | 0255SM015015K | 15 | 15 | 34 | 50 | M5x16 | 5x5 |
| 0255LM016016K | 0255SM016016K | 16 | 16 | 34 | 50 | M5x16 | 5x5 |
| 0255LM018018K | 0255SM018018K | 18 | 18 | 36 | 60 | M5x16 | 6x6 |
| 0255LM020020K | 0255SM020020K | 20 | 20 | 40 | 65 | M6x16 | 6x6 |
| 0255LM025025K | 0255SM025025K | 25 | 25 | 45 | 65 | M6x16 | 8x7 |
| 0255LM030030K | 0255SM030030K | 30 | 30 | 54 | 75 | M6x18 | 8x7 |
| 0255LM035035K | 0255SM035035K | 35 | 35 | 57 | 80 | M6x18 | 10x8 |
| 0255LM040040K | 0255SM040040K | 40 | 40 | 60 | 90 | M6x18 | 12x8 |
| 0255LM045045K | 0255SM045045K | 45 | 45 | 73 | 105 | M6x18 | 14x9 |
| 0255LM050050K | 0255SM050050K | 50 | 50 | 78 | 120 | M8x25 | 14x9 |



Acoplamiento Rígido 2 piezas (con chavetero)

- Alta capacidad de par y rigidez torsional.
- Sin juego
- Fácil Montaje sin necesidad de desplazar los ejes.
- Sujeción por abrazadera.
- Fabricados en: Acero y Acero Inoxidable.



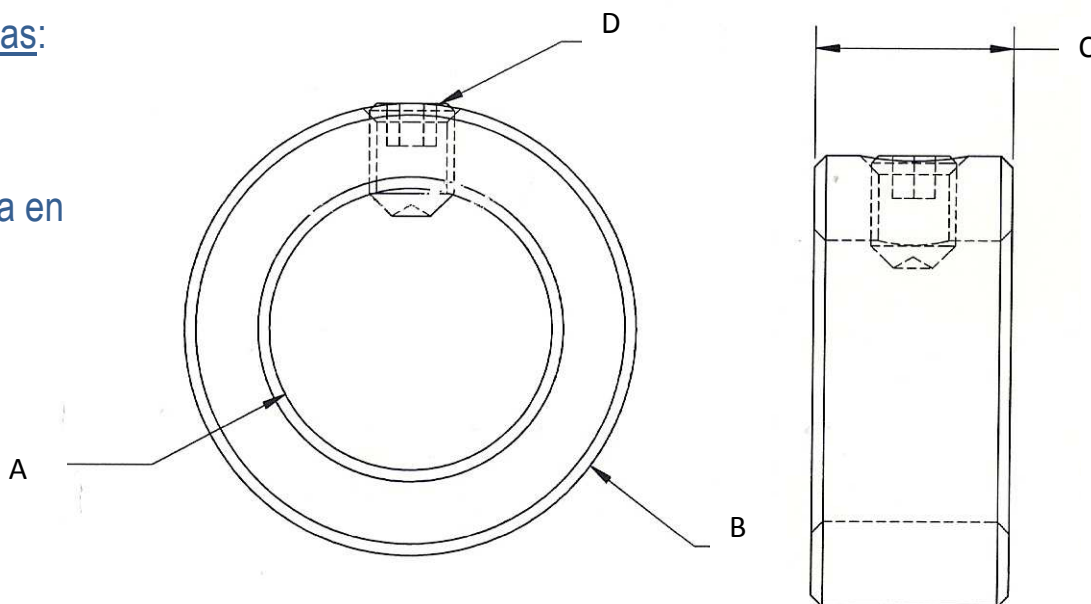
| Ref. ACERO | REF. ACERO INOXIDABLE | A Ø mm. | B Ø mm. | C Ø Ext. | D Longitud | E Tornillo | F Chavetero |
|----------------|-----------------------|------------|------------|-------------|---------------|---------------|----------------|
| 0255LM006006FK | 0255SM006006FK | 6 | 6 | 16 | 30 | M3x8 | 2x2 |
| 0255LM008008FK | 0255SM008008FK | 8 | 8 | 18 | 30 | M3x8 | 2x2 |
| 0255LM009009FK | 0255SM009009FK | 9 | 9 | 24 | 35 | M3x10 | 3x3 |
| 0255LM010010FK | 0255SM010010FK | 10 | 10 | 24 | 35 | M3x10 | 3x3 |
| 0255LM012012FK | 0255SM012012FK | 12 | 12 | 28 | 45 | M4x12 | 4x4 |
| 0255LM014014FK | 0255SM014014FK | 14 | 14 | 30 | 50 | M4x16 | 5x5 |
| 0255LM015015FK | 0255SM015015FK | 15 | 15 | 34 | 50 | M5x16 | 5x5 |
| 0255LM016016FK | 0255SM016016FK | 16 | 16 | 34 | 50 | M5x16 | 5x5 |
| 0255LM018018FK | 0255SM018018FK | 18 | 18 | 36 | 60 | M5x16 | 6x6 |
| 0255LM020020FK | 0255SM020020FK | 20 | 20 | 40 | 65 | M6x16 | 6x6 |
| 0255LM025025FK | 0255SM025025FK | 25 | 25 | 45 | 65 | M6x16 | 8x7 |
| 0255LM030030FK | 0255SM030030FK | 30 | 30 | 54 | 75 | M6x18 | 8x7 |
| 0255LM035035FK | 0255SM035035FK | 35 | 35 | 57 | 80 | M6x18 | 10x8 |
| 0255LM040040FK | 0255SM040040FK | 40 | 40 | 60 | 90 | M6x18 | 12x8 |
| 0255LM045045FK | 0255SM045045FK | 45 | 45 | 73 | 105 | M6x18 | 14x9 |
| 0255LM050050FK | 0255SM050050FK | 50 | 50 | 78 | 120 | M8x25 | 14x9 |



Collarín de Fijación (cltornillo prisionero)

Características:

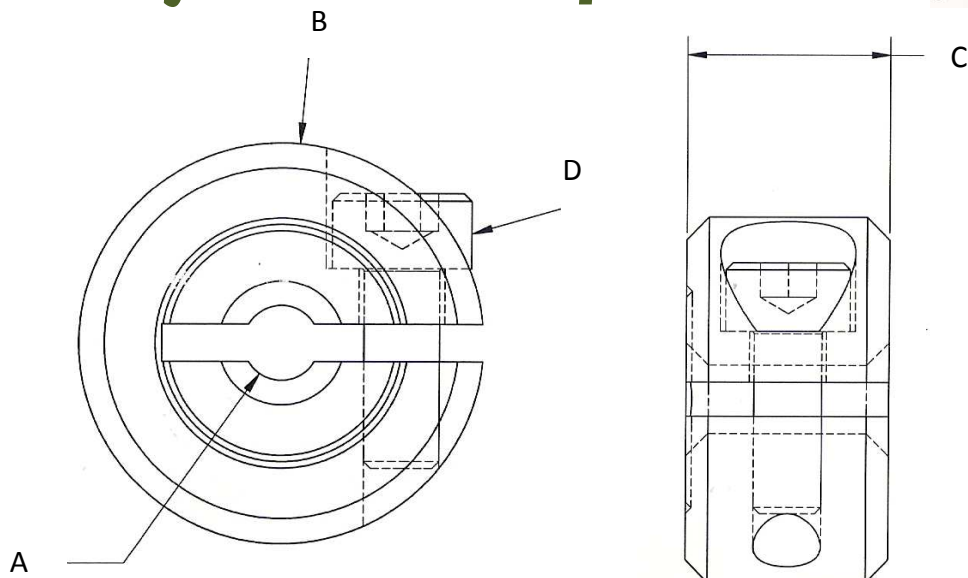
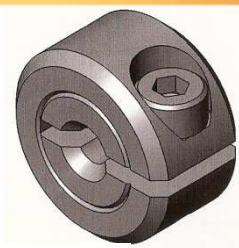
- * Bajo Coste
- * Alta eficacia en ejes blandos



| REF. ACERO ZINCADO | REF. ACERO | REF. ACERO INOXIDABLE | A Ø mm | B Ø Ext. | C Espesor | D Tornillo |
|--------------------|---------------|-----------------------|-----------|-------------|--------------|---------------|
| 02534LM004P2 | 02534LM004P5 | 02534SM004 | 4 | 8 | 5 | M2.6x4 |
| 02534LM005P2 | 02534LM005P5 | 02534SM005 | 5 | 10 | 6 | M3x4 |
| 02534LM006P2 | 02534LM006P5 | 02534SM006 | 6 | 12 | 8 | M4x5 |
| 02534LM008P2 | 02534LM008P5 | 02534SM008 | 8 | 16 | 8 | M4x5 |
| 02534LM0010P2 | 02534LM0010P5 | 02534SM0010 | 10 | 20 | 10 | M5x8 |
| 02534LM0012P2 | 02534LM0012P5 | 02534SM0012 | 12 | 22 | 12 | M6x8 |
| 02534LM0014P2 | 02534LM0014P5 | 02534SM0014 | 14 | 25 | 12 | M6x8 |
| 02534LM0015P2 | 02534LM0015P5 | 02534SM0015 | 15 | 25 | 12 | M6x8 |
| 02534LM0016P2 | 02534LM0016P5 | 02534SM0016 | 16 | 28 | 12 | M6x8 |
| 02534LM0018P2 | 02534LM0018P5 | 02534SM0018 | 18 | 32 | 14 | M6x8 |
| 02534LM0020P2 | 02534LM0020P5 | 02534SM0020 | 20 | 32 | 14 | M6x8 |
| 02534LM0025P2 | 02534LM0025P5 | 02534SM0025 | 25 | 40 | 16 | M8x10 |
| 02534LM0030P2 | 02534LM0030P5 | 02534SM0030 | 30 | 45 | 16 | M8x10 |
| 02534LM0035P2 | 02534LM0035P5 | 02534SM0035 | 35 | 56 | 16 | M8x12 |
| 02534LM0040P2 | 02534LM0040P5 | 02534SM0040 | 40 | 63 | 18 | M10x16 |
| 02534LM0045P2 | 02534LM0045P5 | 02534SM0045 | 45 | 70 | 18 | M10x16 |
| 02534LM0050P2 | 02534LM0050P5 | 02534SM0050 | 50 | 80 | 18 | M10x16 |



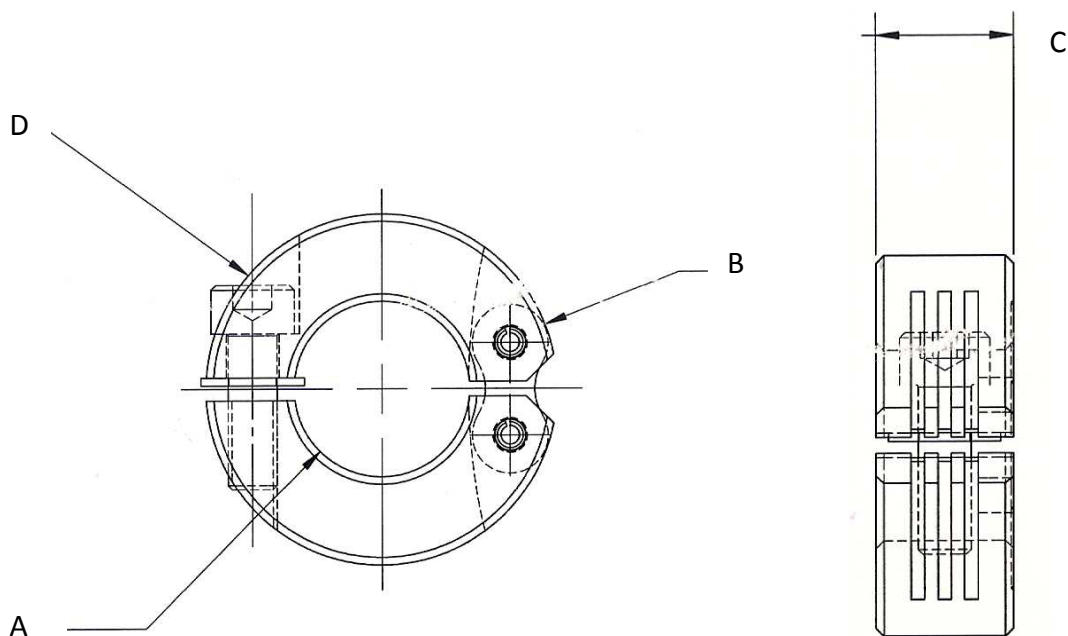
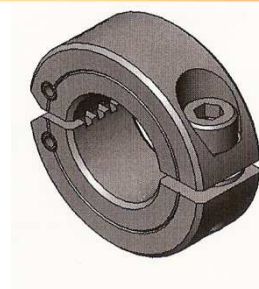
Collarín de Fijación en 1 pieza



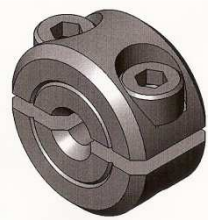
| Ref. ACERO | REF. ACERO INOXIDABLE | A Ø mm. | B Ø Ext. | C Espesor | D Tornillo |
|------------|-----------------------|------------|-------------|--------------|---------------|
| 02531LM003 | 02531SM003 | 3 | 16 | 9 | M3x8 |
| 02531LM005 | 02531SM005 | 5 | 16 | 9 | M3x8 |
| 02531LM006 | 02531SM006 | 6 | 16 | 9 | M3x8 |
| 02531LM008 | 02531SM008 | 8 | 18 | 9 | M3x8 |
| 02531LM009 | 02531SM009 | 9 | 24 | 9 | M3x10 |
| 02531LM010 | 02531SM010 | 10 | 24 | 9 | M3x10 |
| 02531LM012 | 02531SM012 | 12 | 28 | 11 | M4x12 |
| 02531LM014 | 02531SM014 | 14 | 30 | 11 | M4x12 |
| 02531LM015 | 02531LS015 | 15 | 34 | 13 | M5x16 |
| 02531LM016 | 02531LS016 | 16 | 34 | 13 | M5x16 |
| 02531LM017 | 02531LS017 | 17 | 36 | 13 | M5x16 |
| 02531LM018 | 02531LS018 | 18 | 36 | 13 | M5x16 |
| 02531LM020 | 02531LS020 | 20 | 40 | 15 | M6x16 |
| 02531LM025 | 02531LS025 | 25 | 45 | 15 | M6x16 |
| 02531LM030 | 02531LS030 | 30 | 54 | 15 | M6x18 |
| 02531LM035 | 02531LS035 | 35 | 57 | 15 | M6x18 |
| 02531LM040 | 0251LS040 | 40 | 60 | 15 | M6x18 |
| 02531LM045 | 0251LS045 | 45 | 73 | 19 | M6x18 |
| 02531LM050 | 0251LS050 | 50 | 78 | 19 | M8x25 |
| 02531LM055 | 0251LS055 | 55 | 82 | 19 | M8x25 |
| 02531LM060 | 0251LS060 | 60 | 88 | 19 | M8x25 |
| 02531LM065 | 0251LS065 | 65 | 93 | 19 | M8x25 |
| 02531LM070 | 0251LS070 | 70 | 98 | 19 | M8x25 |
| 02531LM075 | 0251LS075 | 75 | 103 | 19 | M8x25 |
| 0251LM080 | 0251LS080 | 80 | 108 | 19 | M8x25 |



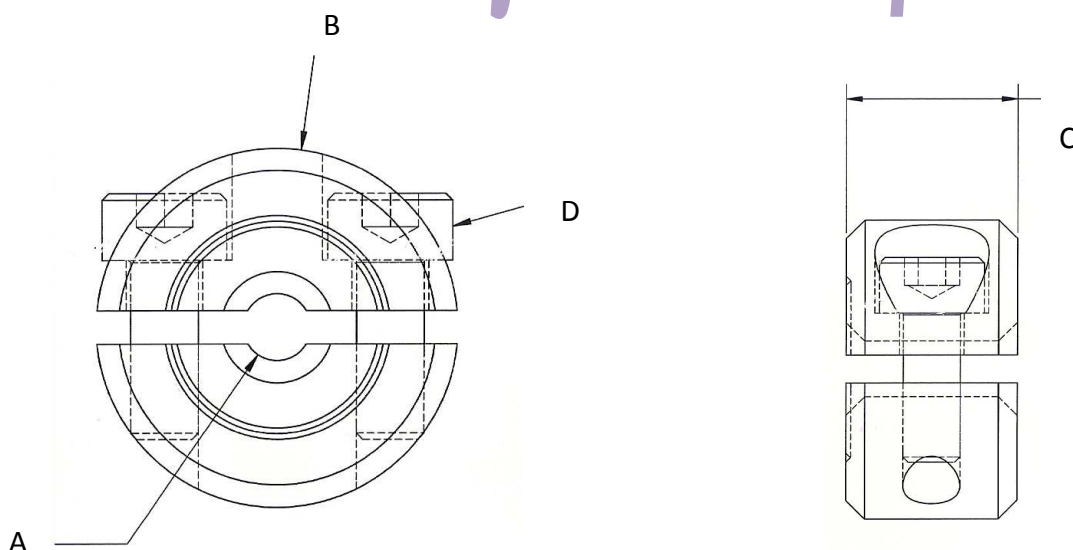
Collarín de Fijación (clabrazadera)



| REF. ACERO | REF. ACERO INOXIDABLE | A Ø mm | B Ø Ext. | C Espesor | D Tornillo |
|------------|-----------------------|-----------|-------------|--------------|---------------|
| 0252LM009H | 0252SM009H | 4 | 8 | 5 | M2.6x4 |
| 0252LM010H | 0252LM010H | 5 | 10 | 6 | M3x4 |
| 0252LM012H | 0252LM012H | 6 | 12 | 8 | M4x5 |
| 0252LM014H | 0252LM014H | 8 | 16 | 8 | M4x5 |
| 0252LM015H | 0252LM015H | 10 | 20 | 10 | M5x8 |
| 0252LM016H | 0252LM016H | 12 | 22 | 12 | M6x8 |
| 0252LM018H | 0252LM018H | 14 | 25 | 12 | M6x8 |
| 0252LM020H | 0252LM020H | 15 | 25 | 12 | M6x8 |
| 0252LM025H | 0252LM025H | 16 | 28 | 12 | M6x8 |
| 0252LM030H | 0252LM030H | 18 | 32 | 14 | M6x8 |
| 0252LM035H | 0252LM035H | 20 | 32 | 14 | M6x8 |
| 0252LM040H | 0252LM040H | 25 | 40 | 16 | M8x10 |
| 0252LM045H | 0252LM045H | 30 | 45 | 16 | M8x10 |
| 0252LM050H | 0252LM050H | 35 | 56 | 16 | M8x12 |



Collarín de Fijación en 2 piezas



| Ref. ACERO | REF. ACERO INOXIDABLE | A Ø mm. | B Ø Ext. | C Espesor | D Tornillo |
|------------|-----------------------|------------|-------------|--------------|---------------|
| 02532LM003 | 02532SM003 | 3 | 16 | 9 | M3x8 |
| 02532LM005 | 02532SM005 | 5 | 16 | 9 | M3x8 |
| 02532LM006 | 02532SM006 | 6 | 16 | 9 | M3x8 |
| 02532LM008 | 02532SM008 | 8 | 18 | 9 | M3x8 |
| 02532LM009 | 02532SM009 | 9 | 24 | 9 | M3x10 |
| 02532LM010 | 02532SM010 | 10 | 24 | 9 | M3x10 |
| 02532LM012 | 02532SM012 | 12 | 28 | 11 | M4x12 |
| 02532LM014 | 02532SM014 | 14 | 30 | 11 | M4x12 |
| 02532LM015 | 02532LS015 | 15 | 34 | 13 | M5x16 |
| 02532LM016 | 02532LS016 | 16 | 34 | 13 | M5x16 |
| 02532LM017 | 02532LS017 | 17 | 36 | 13 | M5x16 |
| 02532LM018 | 02532LS018 | 18 | 36 | 13 | M5x16 |
| 02532LM020 | 02532LS020 | 20 | 40 | 15 | M6x16 |
| 02532LM025 | 02532LS025 | 25 | 45 | 15 | M6x16 |
| 02532LM030 | 02532LS030 | 30 | 54 | 15 | M6x18 |
| 02532LM035 | 02532LS035 | 35 | 57 | 15 | M6x18 |
| 02532LM040 | 0252LS040 | 40 | 60 | 15 | M6x18 |
| 02532LM045 | 0252LS045 | 45 | 73 | 19 | M6x18 |
| 02532LM050 | 0252LS050 | 50 | 78 | 19 | M8x25 |
| 02532LM055 | 0252LS055 | 55 | 82 | 19 | M8x25 |
| 02532LM060 | 0252LS060 | 60 | 88 | 19 | M8x25 |
| 02532LM065 | 0252LS065 | 65 | 93 | 19 | M8x25 |
| 02532LM070 | 0252LS070 | 70 | 98 | 19 | M8x25 |
| 02532LM075 | 0252LS075 | 75 | 103 | 19 | M8x25 |
| 0252LM080 | 0252LS080 | 80 | 108 | 19 | M8x25 |